



Test report

No: 070517-032

Date: 2007.05.24

Page 1 of 2

Client: Beijing Candor Electronic Co.,Ltd.

The following sample(s) was/were submitted and identified on behalf of the client as:

Sample Name: SMD 7050 Crystal

Model: 7050

Sample Received Date: 2007.05.17

Finished Date: 2007.05.24

Test requested: As specified by client, to determine 1) Lead, 2) Cadmium, 3) Mercury, 4) Hexavalent Chromium and, 5) PBBs and PBDEs of the submitted sample

Test Method: 1) With reference to IEC62321, Ed.1 111/54/CDV, Analysis is performed by AAS  
2) With reference to IEC62321, Ed.1 111/54/CDV, Analysis is performed by AAS  
3) With reference to IEC62321, Ed.1 111/54/CDV, Analysis is performed by ICP-AES  
4) With reference to IEC62321, Ed.1 111/54/CDV, Analysis is performed by UV  
5) With reference to IEC62321, Ed.1 111/54/CDV, Analysis is performed by GC-MS

Approved by: *Song Wei*

Tel: Beijing (010) 82618116  
Shanghai (021) 64839815  
Shenzhen (0755) 26050909

E-mail: pony@ponytest.com cs@ponytest.com

http: //www.ponytest.com



Test report

No: 070517-032

Date: 2007.05.24

Page 2 of 2

Test results

Analysis Item	Unit	MDL	RoHS Limit	Test Results	
Lead (Pb)	ppm	1	1000	N.D.	
Cadmium (Cd)	ppm	1	100	N.D.	
Mercury (Hg)	ppm	1	1000	N.D.	
Hexavalent Chromium (Cr <sup>6+</sup> )	ppm	1	1000	N.D.	
PBBs	—	—	1000	—	
Bromobiphenyl	ppm	5		N.D.	
Dibromobiphenyl	ppm	5		N.D.	
Tribromobiphenyl	ppm	5		N.D.	
Tetrabromobiphenyl	ppm	5		N.D.	
Pentabromobiphenyl	ppm	5		N.D.	
Hexabromobiphenyl	ppm	5		N.D.	
Heptabromobiphenyl	ppm	5		N.D.	
Octabromobiphenyl	ppm	5		N.D.	
Nonabromobiphenyl	ppm	5		N.D.	
Decabromobiphenyl	ppm	5		N.D.	
PBDEs	—	—		1000	—
Bromodiphenyl ether	ppm	5			N.D.
Dibromodiphenyl ether	ppm	5	N.D.		
Tribromodiphenyl ether	ppm	5	N.D.		
Tetrabromodiphenyl ether	ppm	5	N.D.		
Pentabromodiphenyl ether	ppm	5	N.D.		
Hexabromodiphenyl ether	ppm	5	N.D.		
Heptabromodiphenyl ether	ppm	5	N.D.		
Octabromodiphenyl ether	ppm	5	N.D.		
Nonabromodiphenyl ether	ppm	5	N.D.		
Decabromodiphenyl ether	ppm	5	N.D.		

Note: mg/kg=ppm

MDL=Method Detection Limit

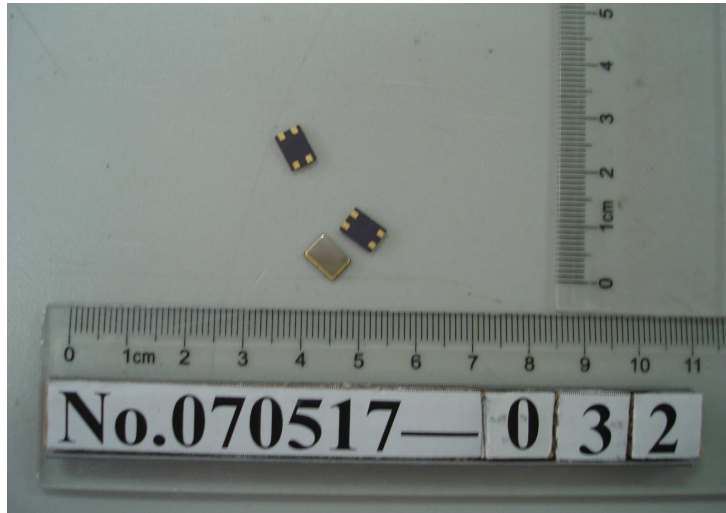
N.D.=Not Detected(<MDL)

\*\*\*End of Report\*\*\*



No: 070517-032

PHOTO



Tel: Beijing (010) 82618116  
Shanghai (021) 64839815  
Shenzhen (0755) 26050909  
E-mail: pony@ponytest.com cs@ponytest.com  
http: //www.ponytest.com